

1

2

5

7

B

C

D

F

E

F

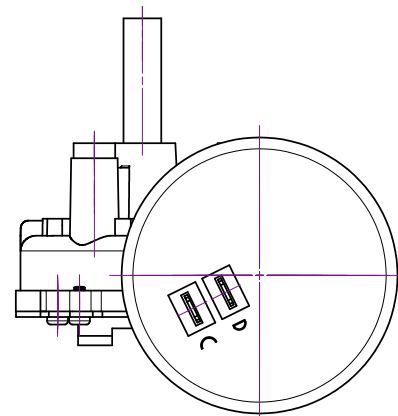
B

C

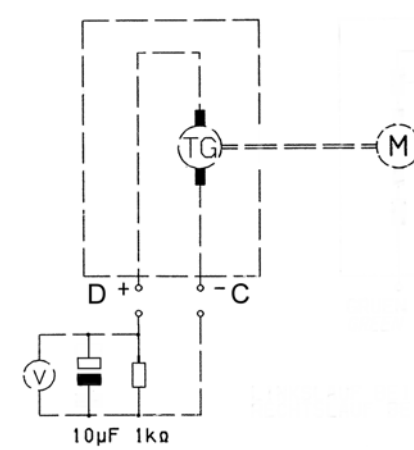
D

F

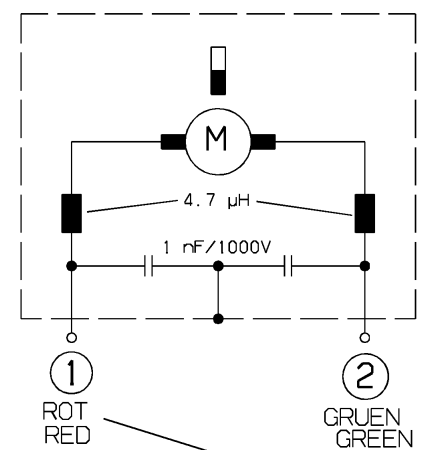
E



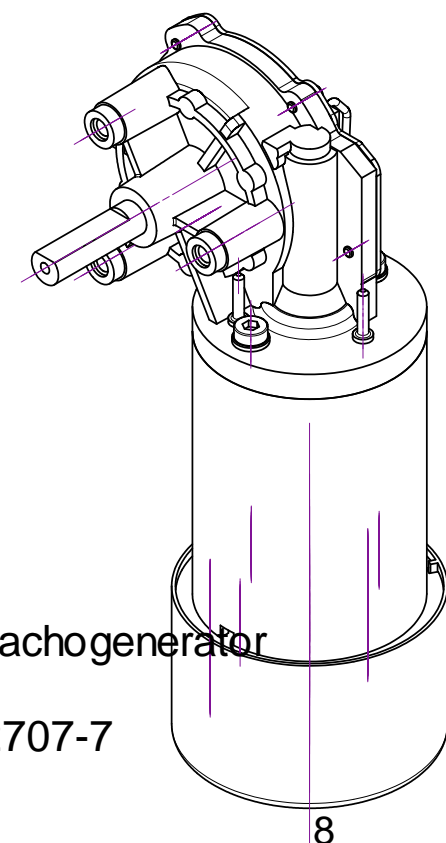
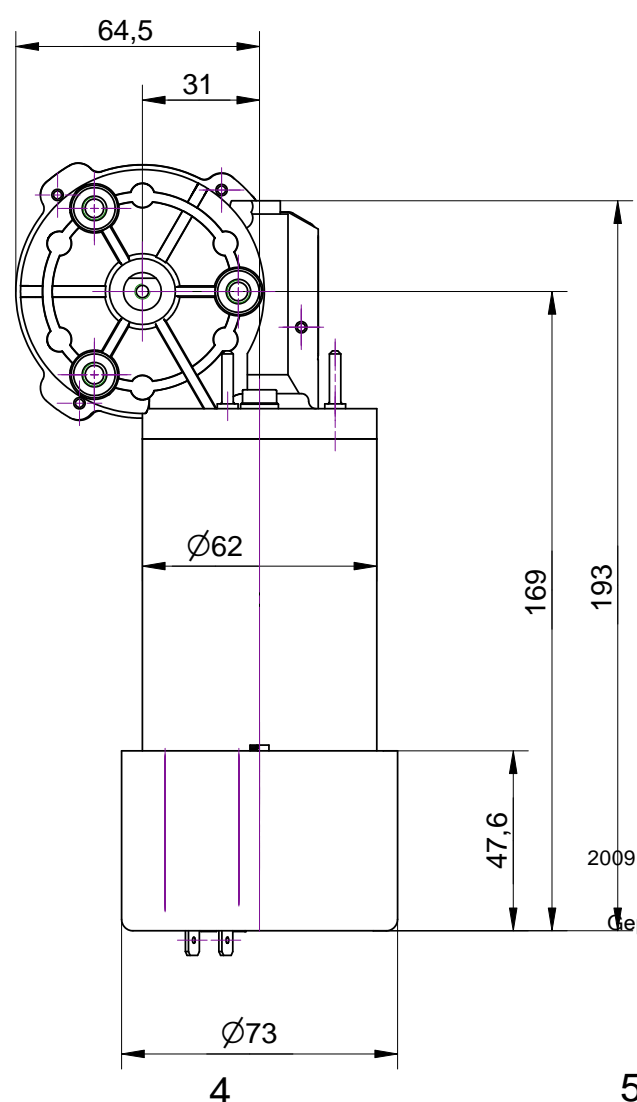
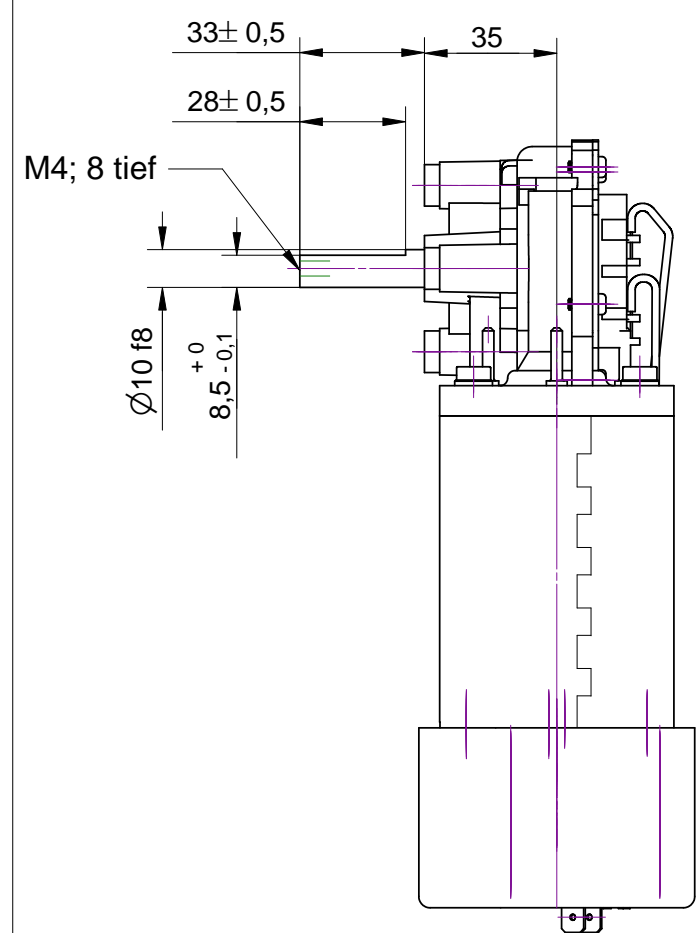
MOTOR MIT TACHOGENERATORANSCHLUSS
MOTOR WITH SPEEDOGENERATOR CONNECTION



SCHALTBILD
CIRCUIT DIAGRAM



+ RECHTSLAUF CW ROTATION
- LINKSLAUF CCW ROTATION



Maßstab

Benennung

Name

mi Tachogenerator

402707-7

8

2009
Gepr. 14.04.09 Kornberger
Ma.Ott

ISO 2768 - m 0

URHEBERSCHUTZ NACH DIN 34

Zust.	Änderung	Datum
Bearb.	17.02.	
Allgemeintoleranz		



Werkstoff / Rohteil	
Getriebemotor SWMK	
Zg.Nr.	Blatt

1

2

3

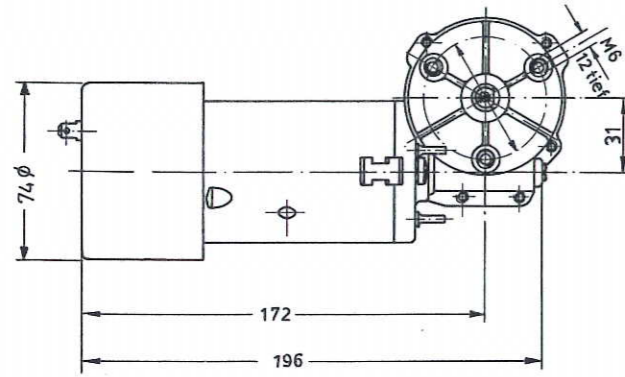
6

7



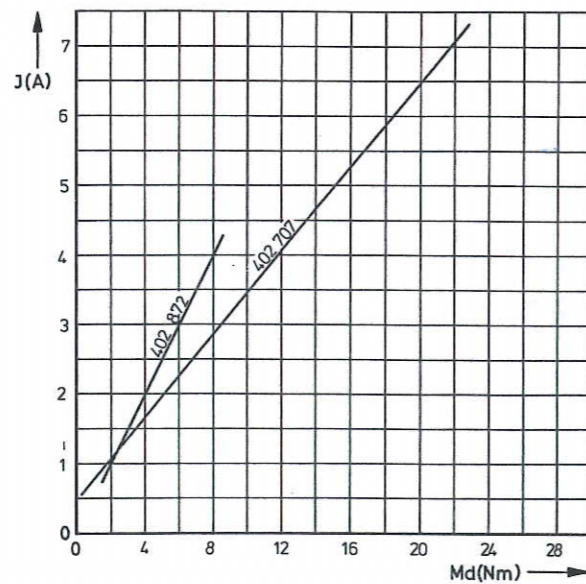
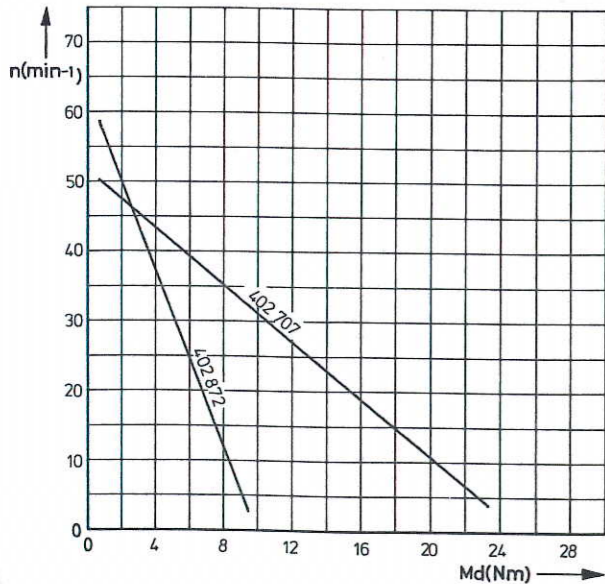
Gleichstrom-Getriebemotoren
Geared DC motors
Moto-réducteurs à courant continu

Baureihe
Series
Série **0270**
(SWMK)



Typ	U [V]	M _N [Nm]	M _A [Nm]	n _N [min ⁻¹]	i	P ₁ [W]	P ₂ [W]	Welle Shaft Arbre	Schaltbild Wiring diagram Schéma électrique	Anschlußart Connections Connexions	Schneckenrad Worm wheel Roue de vis sans fin
402707	24	3	20	45	$\frac{55}{1}$	35	14	W 40	S 15	K 52/K 74	KST
402872	24	1,5	7	53	$\frac{53}{2}$	20	9	W 40	S 15	K 52/K 74	KST

KST Kunststoff-Schneckenrad
Synthetic worm wheel
Roue de vis sans fin en plastique

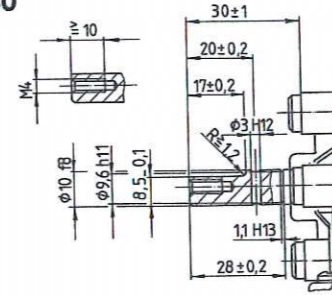


Gleichstrom-Getriebemotoren
Geared DC motors
Moto-réducteurs à courant continu

Baureihe
Series
Série **0270**
(SWMK)

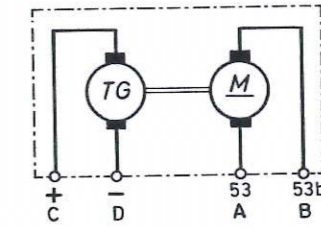
Welle
Shaft
Arbre

W 40



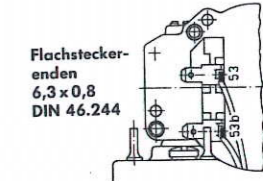
Schaltbild
Wiring diagram
Schéma électrique

S 15



Anschlußart
Connections
Connexions

K 52



K 74

