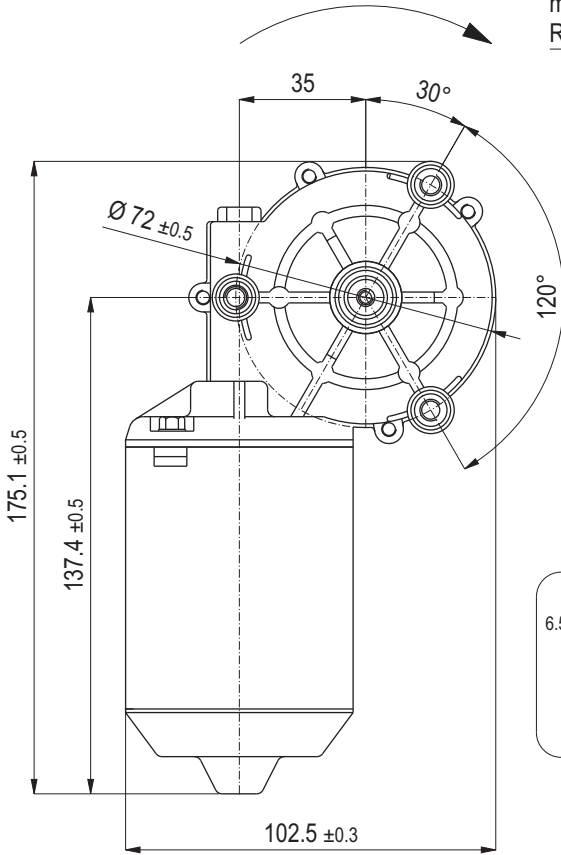
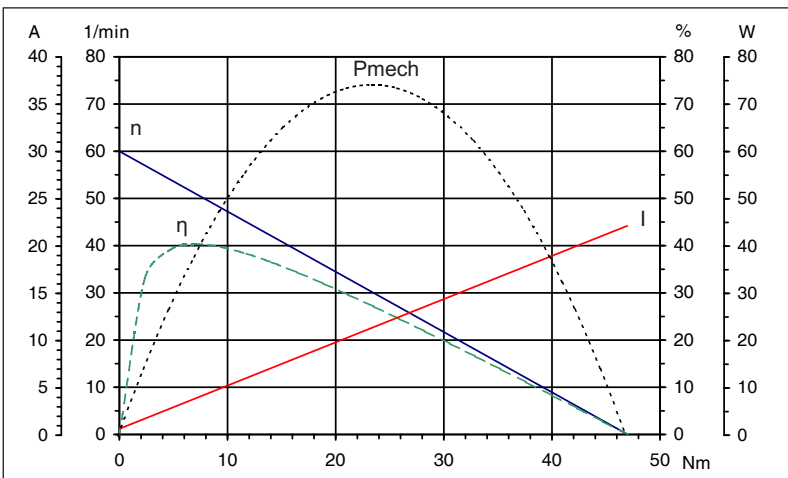
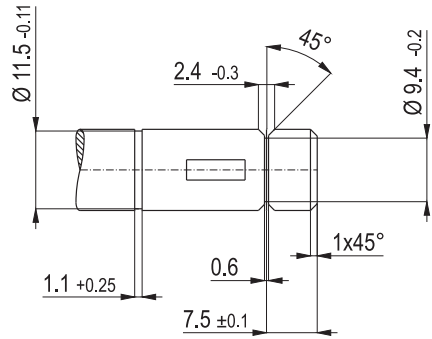
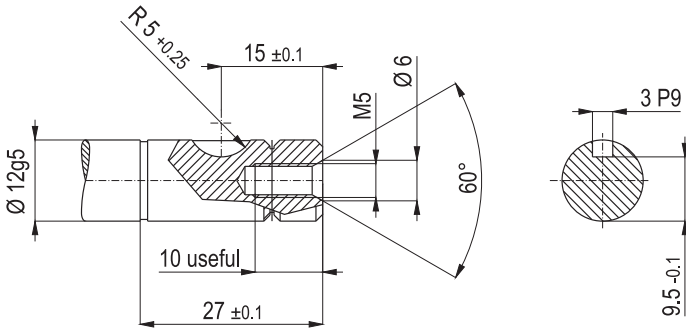
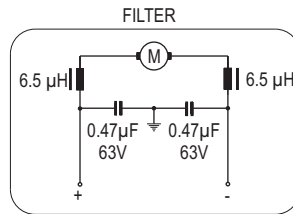
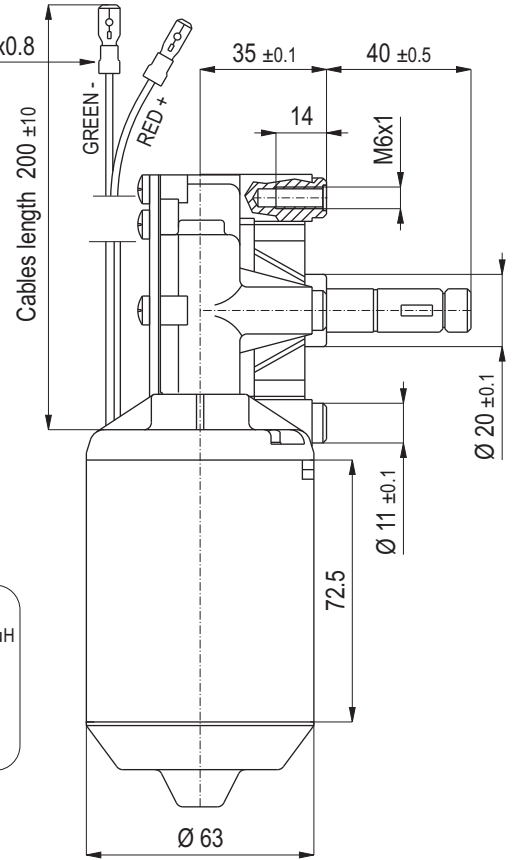


CLOCKWISE
with positive voltage on red cable



ALIMENTATION CABLES:
PVC section 0.75 mm with
male insulated faston.
RED 4.8x0.8 / GREEN 6.3x0.8



Technische Daten / Technical data		
Nennspannung / Nominal voltage	24	V/DC
Leerlaufdrehzahl / No-load speed	60	min ⁻¹
Nennmoment / Nom. torque	4,5	Nm
Anlaufmoment / Starting torque	47	Nm
Zahnradwerkstoff / Gear material	Kunststoff / Plastic	
Übersetzung / Gear ratio	63:1	
Schutzart / Protection class	IP 30	
Gewicht / Weight	1,2	kg

Diese Angaben sind Mittelwerte gemessen im kalten Zustand des Motors. Abweichungen von ±10% sind möglich. Technische Änderungen vorbehalten.
These data are measured average values at cold engine. Deviations from ±10% are possible. Subject to change without notice.