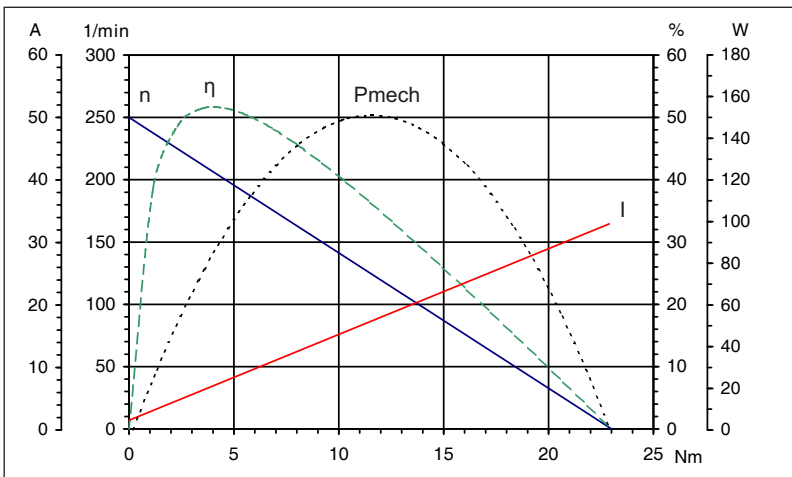
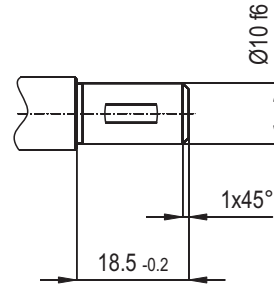
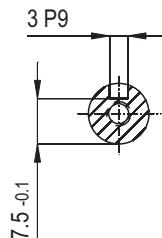
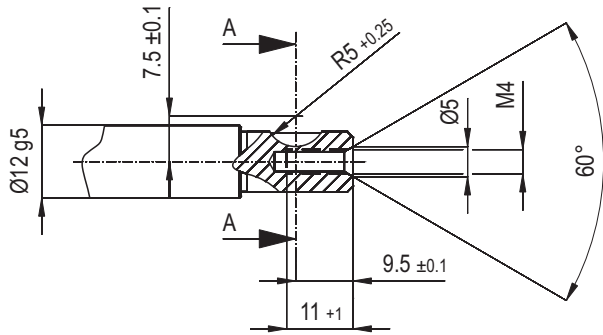
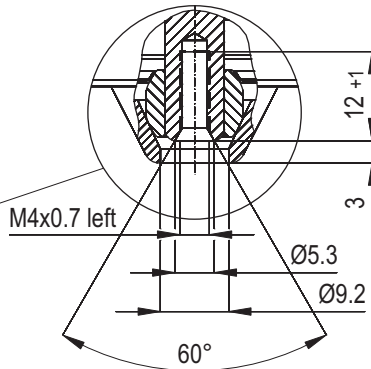
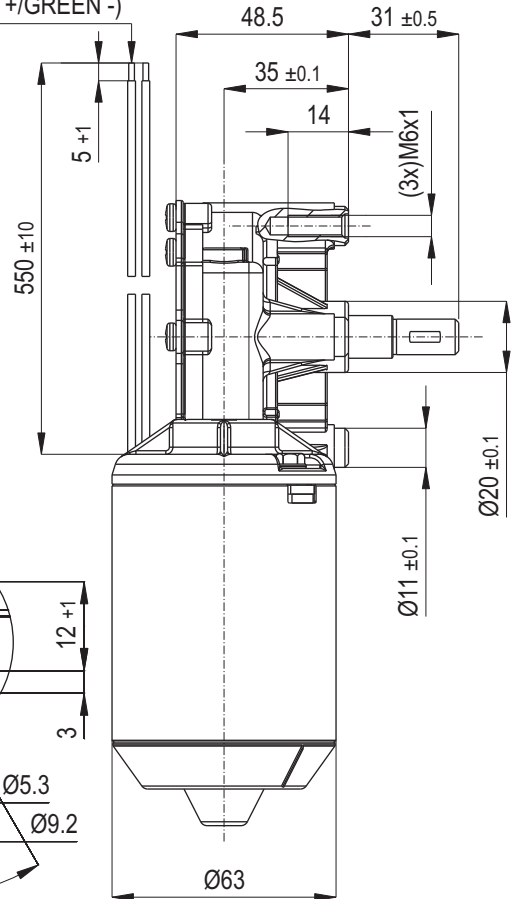
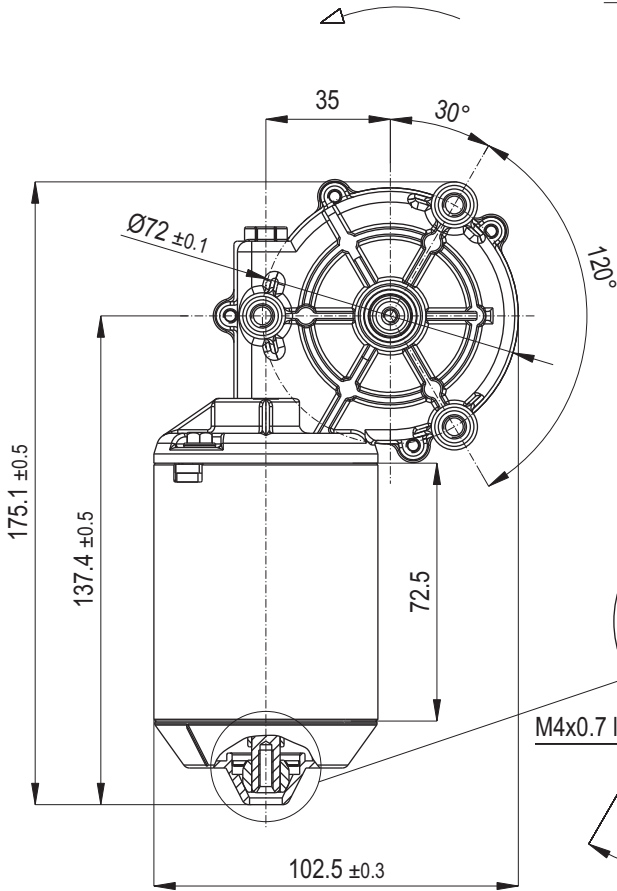


COUNTER CLOCKWISE  
with positive voltage on red cable

ALIMENTATION CABLES:  
PVC 0.75mm<sup>2</sup>, (RED +/GREEN -)



Technische Daten / Technical data		
Nennspannung / Nominal voltage	24	V/DC
Leerlaufdrehzahl / No-load speed	250	min <sup>-1</sup>
Nennmoment / Nom. torque	1,5	Nm
Anlaufmoment / Starting torque	23	Nm
Zahnradwerkstoff / Gear material	Kunststoff / Plastic	
Übersetzung / Gear ratio	70:4	
Schutzart / Protection class	IP 30	
Gewicht / Weight	1,2	kg

Diese Angaben sind Mittelwerte gemessen im kalten Zustand des Motors. Abweichungen von ±10% sind möglich. Technische Änderungen vorbehalten.  
These data are measured average values at cold engine. Deviations from ±10% are possible. Subject to change without notice.